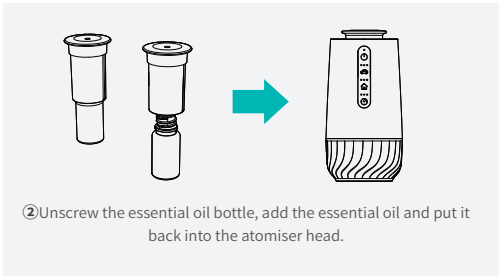
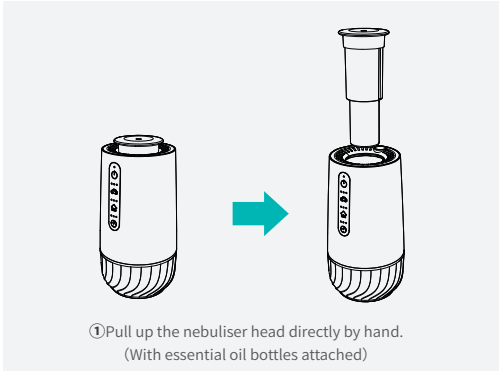
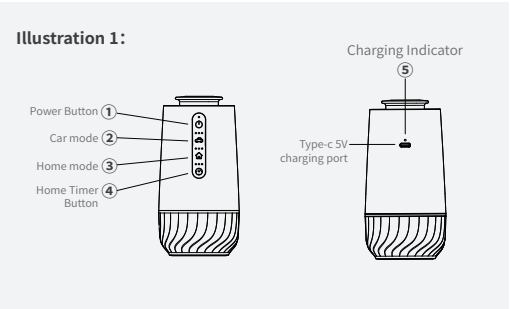


Please read carefully before using and keeping it properly.
We supply warranty within 12 months after purchase date for all qualified machines. During warranty, we will offer repair services and the free parts, essential oil not included. Once the warranty period expires, repair services will be charged, please read the detailed items from the below warranty list.

01/Equipment Installation



02/Button and Indicator Function Description



****Default car mode on, first gear on 5 seconds stop 240 seconds**

1.Regular version:

(This version does not come with starlight and anti-tilting warning.)

① Power Button: Long press for 2 seconds to switch on/off, the buzzer beeps twice and the blue indicator light is always on.

② Car mode: Tap the Car Mode icon.

(Note: Car mode starts and stops with the car, no timer function.)

Indicator status:		
First gear	One blue light	Air pump on for 5 seconds, off for 240 seconds
Second gear	Two blue light	Air pump on for 15 seconds, off for 180 seconds
Third gear	Three blue lights	Air pump on for 30 seconds, off for 120 seconds
Gear indicator all off		Shutdown or hibernation status

③ Home mode:
Tap to switch the fragrance spraying gear
(when currently in car mode, you need to tap the home mode icon first)

Indicator status:

First gear	One blue light	Air pump on for 5 seconds, off for 240 seconds
Second gear	Two blue light	Air pump on for 15 seconds, off for 180 seconds
Third gear	Three blue lights	Air pump on for 30 seconds, off for 120 seconds
Gear indicator all off		The device is switched off or in vehicle mode

④ Home Timer Button: Tap to toggle the time

Indicator status:

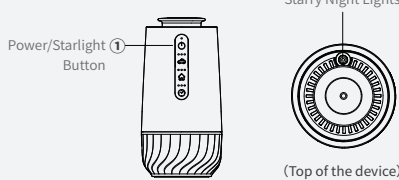
First gear	One blue light	Home mode, Timed to turn off after 2 hours.
Second gear	Two blue light	Home mode, Timed to turn off after 4 hours.
Third gear	Three blue lights	Home mode, Timed to turn off after 6 hours.
Indicator lights are all off		The device is switched off or in vehicle mode

⑤ Charging Indicator:

low battery	Charging	fully charged
Red light flashing	Red light is always on	Green light is always on

2.Starlight version : (This version comes with starlight and anti-tilting warning.)

Illustration 2:



① Long press: Long press for 2 seconds to switch on/off, the buzzer beeps twice and the blue indicator light is always on.
Short press: Tap to turn on/off the starlight

② Anti-tilting alarm:

When the device is tilted or upside-down, it may result in essential oil leakage. In its working or charging state while power off, when tilted beyond 45-degree angle, the device beeps for 10 seconds.



03/Product Parameter

- | | |
|------------------------|---------------------------------|
| • Size: W71×D71×H141mm | • Weight: 280g |
| • Voltage: Type-C 5V | • Capacity: 10ml |
| • Power: 4W | • Coverage: 10-50m ³ |

04/Packing

Equipment×1, Type-C Power cable×1, User Manual×1

06/Equipment Maintenance

If the equipment is not used for a long time, 95% industrial alcohol should be added into the oil bottle to clean the nozzle and other parts inside the equipment. Tip: Maintain the equipment with 95% industrial alcohol at least every 1-2 months.

Specific operation: add 95% industrial alcohol into the empty bottle, turn on the equipment and run for 10-15 minutes. Then turn off the equipment, pour the alcohol, and screw back the bottle to the machine.

07/Warranty

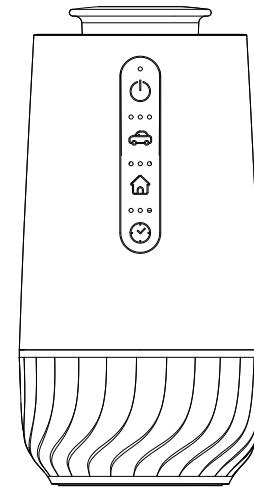
- The Warranty is suitable for new machine but not resold or second hand products.
- Within 12 months after purchase date, Warranty is offered for all qualified machines. During warranty, we will offer repair services and the free parts. Essential oil is not included.
- The warranty card & purchase Invoice are needed if after service is required. Please contact with us within warranty if any problems.
- The following is not for free warranty service:
 - ① Damage & problems caused by Accidents & Fire.
 - ② Not used properly and wrong operation.
 - ③ Repaired by non-professionals, causing some parts damaged.
 - ④ Damaged during transportation.
 - ⑤ Without our warranty card.
 - ⑥ Without proper cleaning for a long time
 - ⑦ The machine is overworked.
 - ⑧ Machines & Parts not from us.
 - ⑨ Machines not purchased from official channels.
 - ⑩ Send the machines back without permit from the manufacturer .

08/Notice

- Please read carefully before using and keeping it properly.
- During transportation of the device, the bottle must be emptied to avoid leakage of essential oils and damage to the device.
- When the equipment is loaded with essential oil, it must be kept upright and upward, and cannot be inverted or tilted, otherwise the essential oil will leak and damage the internal parts of the equipment.
- Do not use overloaded power sockets, power cords and broken power plugs, otherwise your safety may be jeopardized and fire may be caused; Do not damage the lithium battery, otherwise it may lead to danger.
- Please do not open the machine by yourself, if problems, please contact us promptly !

CAR HOME

Smart Diffuser



INSTRUCTION MANUAL

Please read the manual carefully before use and keep it properly